

Update for Clinicians on the Reporting of Influenza-Associated Hospitalizations and Deaths for the 2009–2010 Influenza Season
September 18, 2009
Michigan Department of Community Health

Surveillance for All Influenza-Associated Hospitalizations and Deaths

Starting September 1, 2009, the CDC began counting any hospitalizations and deaths related to all influenza viruses for the 2009–2010 influenza season (i.e., numbers reset to zero). The CDC has requested that all states participate in influenza-associated hospitalization and death surveillance, with the goal of tracking both seasonal influenza and 2009 novel influenza A (H1N1) activity within each state. This surveillance is a newly expanded effort in Michigan, as previous surveillance efforts have concentrated on pediatric deaths or deaths associated with novel 2009 influenza A (H1N1). As part of this effort, the Michigan Department of Community Health (MDCH) will be submitting weekly reports of all laboratory-confirmed influenza hospitalizations and laboratory-confirmed influenza deaths to CDC.

Action Steps for Clinicians

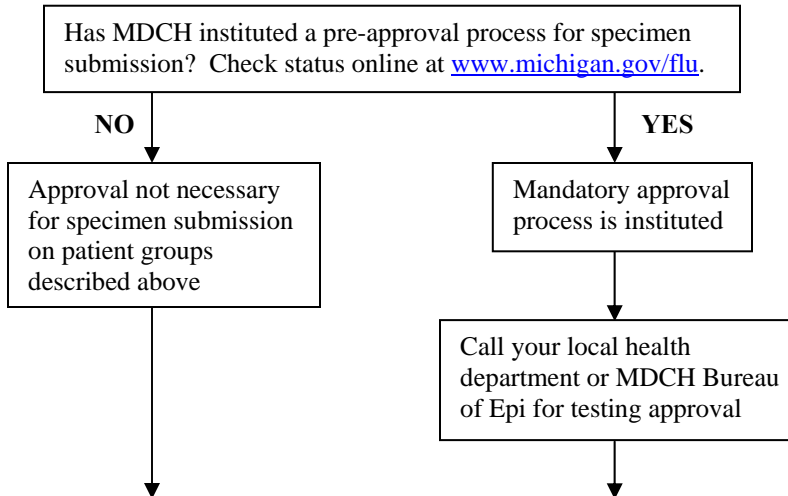
- Report ALL laboratory-confirmed influenza-associated hospitalizations and deaths, including both those due to seasonal influenza strains and 2009 novel influenza A (H1N1), as soon as possible to your local health department.
- This reporting begins immediately and will continue throughout the influenza season until further notification.
- Local health department directories can be found online at <http://www.malph.org/page.cfm/18/>.
- As a reminder, only patient groups of public health significance (ICU hospitalizations, severely ill pregnant women, patients with unusual and severe presentations such as encephalopathy, deaths, patients associated with facility outbreaks) are eligible for influenza testing at the MDCH Bureau of Laboratories (BOL) during the 2009–2010 season.
- Additional clinical laboratories providing diagnostic influenza testing are now available for diagnostic testing of patients who do not meet the above criteria.

Previously distributed guidance and other helpful lab material is located online at www.michigan.gov/mdchlab by clicking on the “Laboratory Novel H1N1 Influenza Page.” Questions regarding influenza reporting can be directed to your local health department or the MDCH Bureau of Epidemiology at 517-335-8165. Additional information is available online at www.michigan.gov/flu.

Influenza Testing Algorithm for Cases and Outbreaks – Fall 2009 Michigan Department of Community Health

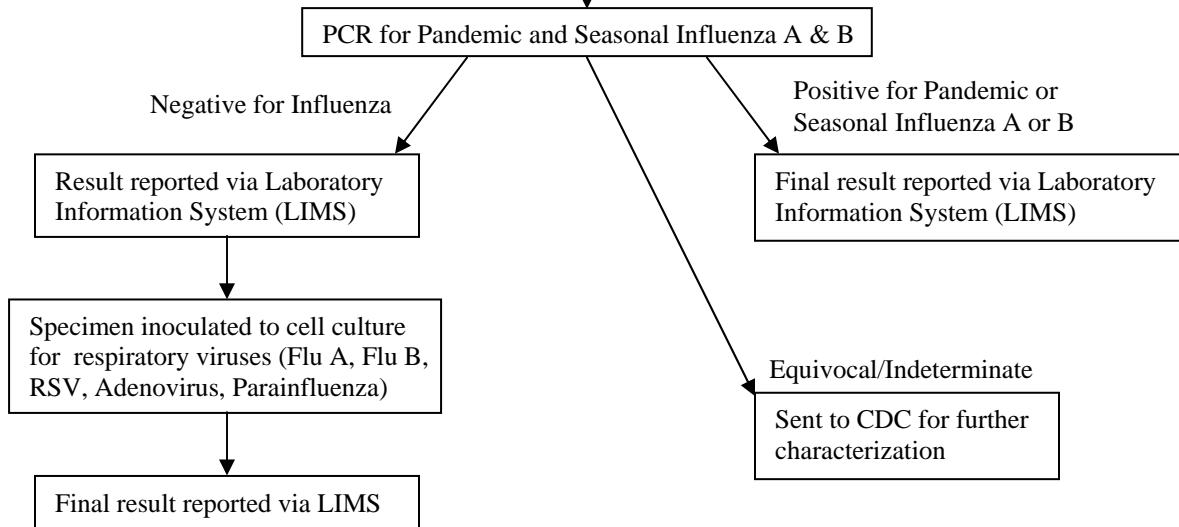
Questions regarding case and outbreak influenza testing should be directed to the MDCH Bureau of Epidemiology at 517-335-8165 during normal business hours or 517-335-9030 after hours.

MDCH influenza testing will only be conducted for public health case investigations ([†]ICU hospitalizations, severely ill pregnant women, patients with unusual and severe presentations, and deaths) and for congregate setting outbreak/cluster investigations. See “MDCH 2009-2010 Guidelines for Clinicians on Influenza Testing,” available on the MIHAN and at www.michigan.gov/flu, for more information and for reporting requirements.



Collect acceptable specimen*[#] and ship to MDCH on frozen cold packs, along with MDCH lab test request form (go to www.michigan.gov/mdchlab and click on “Test Request Forms” and “Microbiology/Virology DCH-0583”).

On test request form, (1) under “Specimen Information” enter “Novel Influenza A PCR” in the “Other – Specify Test Code/Name” field. (2) Under the “Indicate Test Reason Below” subsection, enter reason for testing[†] (see top box above) in the “Other-Specify” field. If approval process is instituted, also write the name of person (and health department) giving approval in the space marked “MDCH Prior Approval Given By.” Testing will be delayed if this information is not provided.



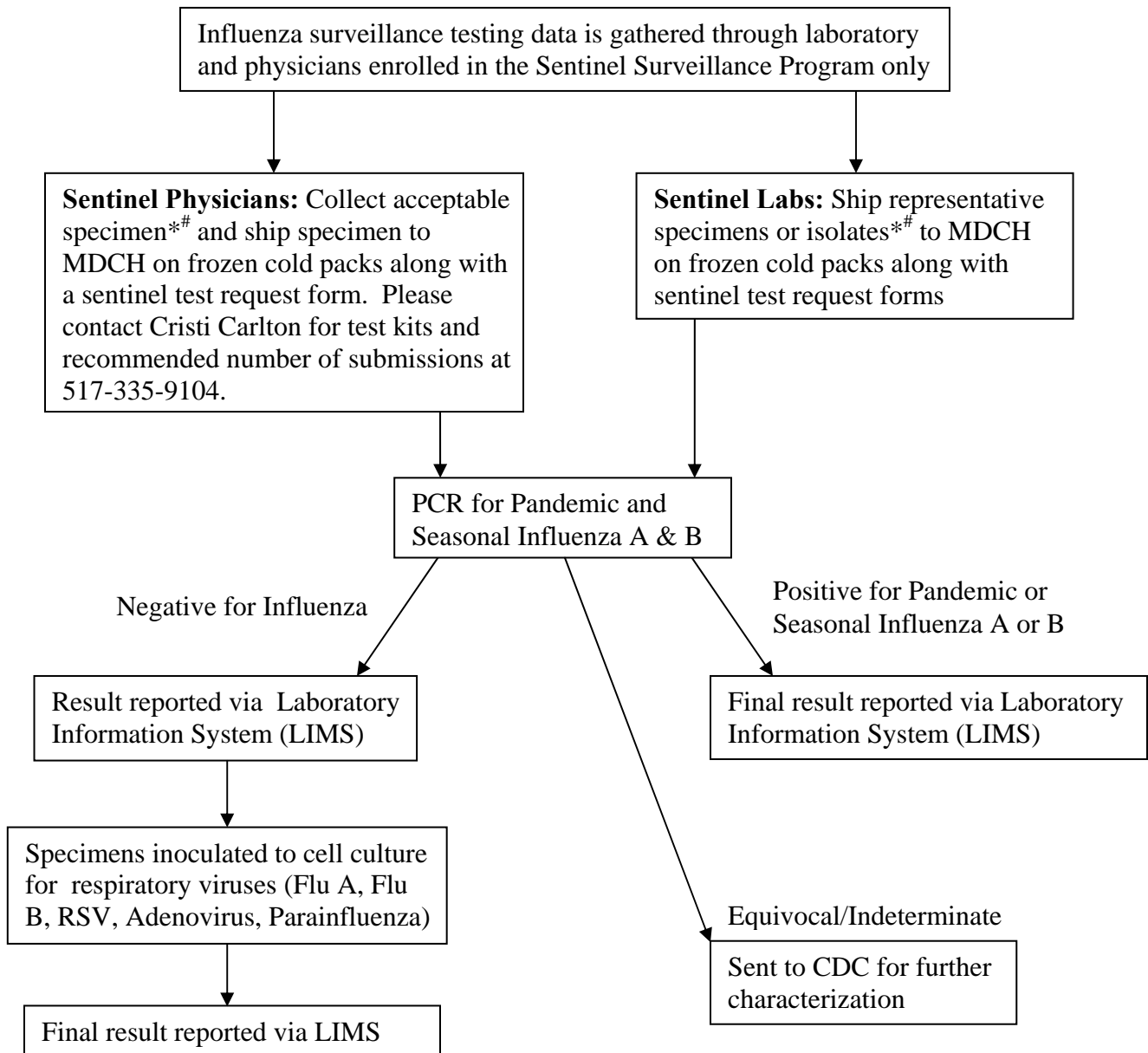
* Acceptable specimens: NP swab in viral transport medium (VTM) or saline (PBS); Nasal swab in VTM or PBS; Dual NP/OP swabs in VTM or PBS; Nasal aspirates; Viral isolates. **DO NOT SUBMIT MULTIPLE SAMPLES ON THE SAME PATIENT.**

Swabs used in influenza rapid diagnostic tests **cannot** be reused for MDCH testing. Consider collecting two swabs so that one may be reserved for MDCH confirmatory testing if needed. Alternatively, an aliquot of the original specimen may be submitted.

Surveillance Testing Algorithm for Influenza – Fall 2009
Michigan Department of Community Health

NOTE: Surveillance samples should only be submitted by physicians and laboratories enrolled in the statewide Sentinel Surveillance Program. If you are unsure whether you are enrolled or if you would like to enroll in this program, please consult your local health department or MDCH (517-335-9104 for physicians; 517-335-8165 for labs).

Surveillance Testing



* Acceptable specimens: NP swab in viral transport medium (VTM) or saline (PBS); Nasal swab in VTM or PBS; Dual NP/OP swabs in VTM or PBS; Nasal aspirates; Viral isolates. **DO NOT SUBMIT MULTIPLE SAMPLES ON THE SAME PATIENT.**
 # Swabs used in influenza rapid diagnostic tests **cannot** be reused for MDCH testing. Consider collecting two swabs so that one may be reserved for MDCH confirmatory testing if needed. Alternatively, an aliquot of the original specimen may be submitted.