

\*Blood lead level was confirmed by venous blood draw, not just reading from capillary blood testing. Source: Michigan Department of Community Health

## CHAPTER 7:

### Social and Mental Health

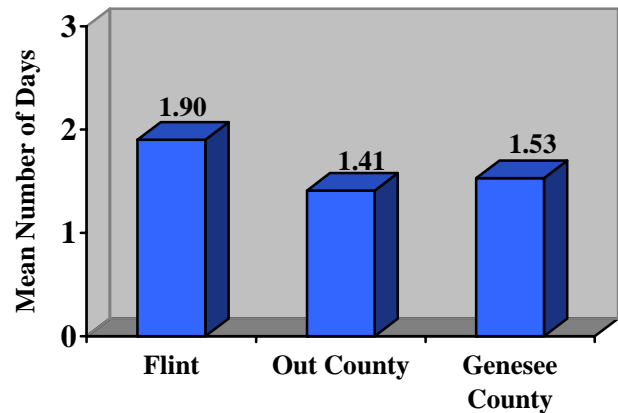
Because health is not only the absence of physical disease, it is important to consider mental health status and other indicators of social health when assessing a community's overall health. Also, those factors which influence mental health status, including substance abuse, violence, and other safety issues, may also affect physical health.

.....

#### MENTAL HEALTH STATUS

- ◆ As shown in Figure 7.1, Flint residents had a higher mean number of days where their mental health status was not good than Out County residents.
- ◆ In Genesee County, females were more likely to report more days where mental health status was not good than males.
- ◆ Mental health status varied by age with the age group 45-64 having the highest average of poor mental health days.

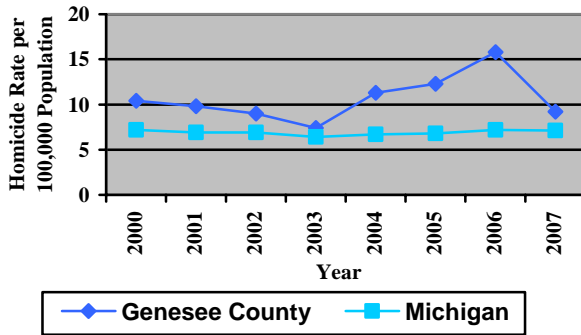
Fig. 7.1 Mean Number of Days Mental Health Kept Residents From Doing Usual Activities in the Past 30 Days by Location, 2007



Source: Speak to Your Health! Community Survey, 2007, Prevention Research Center of Michigan

## HOMICIDE

**Fig. 7.2 Age-Adjusted Homicide Rates, Genesee County and Michigan, 2000-2007**



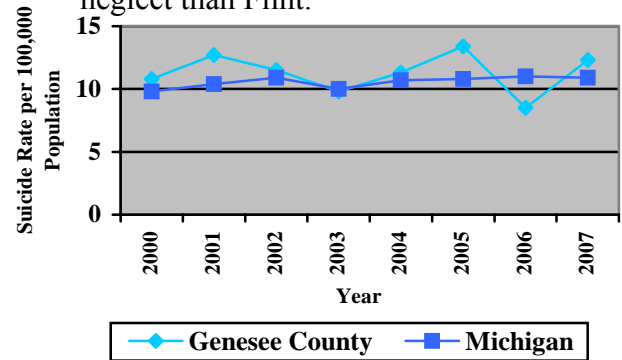
Source: Michigan Department of Community Health.

- ◆ Overall, Genesee County’s homicide rate has fluctuated over the 7 year period shown, peaking in 2006 with a rate of 15.8 homicides per 100,000 people.
- ◆ Michigan has had a steady homicide rate over the 7 year period.

## SUICIDE

- ◆ Between 2000 and 2007 the number of suicides in Genesee County ranged from 37 to 58 with an average number of 49 suicides per year.
- ◆ The number of suicides of persons under 25 years of age ranged from 4 to 8 between 2000 and 2007, peaking in 2005 with 8 suicides among persons in that age group.

**Fig. 7.4 Age-Adjusted Suicide Rates for Genesee County and Michigan, 2000-2007**



- ◆ Michigan has a lower rate of suicide than Flint.

## CHILD ABUSE AND NEGLECT

- ◆ According to the data in Figure 7.3, Genesee County has some of the highest rates of confirmed victims of child abuse or neglect in Michigan.
- ◆ Michigan’s rate of investigated families is 65.2 per 1000 compared to Genesee County’s much higher rate of 103.4.

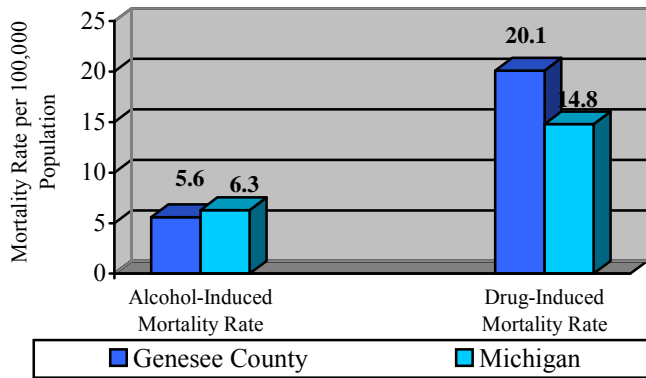
Source: Michigan Department of Community Health.

<b>Fig. 7.3 Child Abuse and Neglect, Genesee County, Fiscal Year 2007</b>			
	<b>Number</b>	<b>Rate (per 1,000)</b>	<b>Rank*</b>
<b>Children in investigated families</b>	11,873	103.4	73 of 83
<b>Confirmed victims of abuse or neglect</b>	2,113	18.4	61 of 82

\*Rank is out of Michigan’s 83 counties. A rank of 1 means a county has the best rate compared to other counties in the state. Not all 83 counties can be ranked on all indicators. Source: Kids Count in Michigan Data Book, 2008

## ALCOHOL AND DRUG-INDUCED DEATHS

**Fig. 7.5 Age-Adjusted Alcohol and Drug-Induced Mortality Rates, Genesee County and Michigan, 2007**



- ◆ In 2007, Genesee County had a slightly lower rate of alcohol-induced deaths than Michigan, while the County had higher rates of drug-induced deaths than the State.

Source: Michigan Department of Community Health

## ALCOHOL-INVOLVED TRAFFIC CRASHES

- ◆ Alcohol-involved traffic crashes are a significant public health issue. The reported alcohol-involved fatal traffic crashes in Genesee County accounted for nearly 6.1% of all such crashes in the State of Michigan in 2007 and 6.4% in 2008.

**Fig. 7.6 Reported Alcohol-Involved Traffic Crashes, Genesee County, 2007-2008**

	All	Fatal	Injury	Property Damage	Persons Killed	Persons Injured
<b>2007</b>	537	19	243	275	20	324
<b>2008</b>	446	19	193	234	22	273

- ◆ In 2008, the rate of alcohol-involved fatal traffic crashes in Genesee County was 4.43 per 100,000 residents. This was higher than the rate for the State of Michigan, 2.97 per 100,000 residents.

Source: Michigan Office of Highway Safety and Planning